

# Packaging Information of Surface Mount Device

## Surface Mount Taping Specifications ( See Figure A)

Component Outline	W mm	B1 Max. mm	C mm	d1 Max. mm	d mm	E mm	F mm	P mm	Po mm	T Max. mm	Ao Bo Ko
0603	8.0+0.2	4.5	1.00+0.10	1.0	1.55+0.1	1.75+0.10	3.5+0.05	4.00+0.10	4.00+0.10	0.20+0.05	See Note
1005	8.0+0.2	4.5	1.05+0.10	1.0	1.55+0.1	1.75+0.10	3.5+0.05	4.00+0.10	4.00+0.10	0.25+0.05	
SOD-723	8.0+0.2	4.5	1.40+0.10	1.0	1.55+0.1	1.75+0.10	3.5+0.05	4.00+0.10	4.00+0.10	0.20+0.05	
SOD-523	8.0+0.2	4.5	1.40+0.10	1.0	1.55+0.1	1.75+0.10	3.5+0.05	4.00+0.10	4.00+0.10	0.20+0.05	
SOD-323	8.0+0.2	4.5	1.40+0.10	1.0	1.55+0.1	1.75+0.10	3.5+0.05	4.00+0.10	4.00+0.10	0.20+0.05	
SOD-123	8.0+0.2	4.5	1.40+0.10	1.0	1.55+0.1	1.75+0.10	3.5+0.05	4.00+0.10	4.00+0.10	0.20+0.05	
SOT-523	8.0+0.2	4.5	1.40+0.10	1.0	1.55+0.1	1.75+0.10	3.5+0.05	4.00+0.10	4.00+0.10	0.40+0.05	
SOT-563	8.0+0.2	4.5	1.40+0.10	1.0	1.55+0.1	1.75+0.10	3.5+0.05	4.00+0.10	4.00+0.10	0.40+0.05	
SOT-323	8.0+0.2	4.5	1.40+0.10	1.0	1.55+0.1	1.75+0.10	3.5+0.05	4.00+0.10	4.00+0.10	0.40+0.05	
SOT-363	8.0+0.2	4.5	1.40+0.10	1.0	1.55+0.1	1.75+0.10	3.5+0.05	4.00+0.10	4.00+0.10	0.40+0.05	
SOT-23	8.0+0.2	4.5	1.40+0.10	1.0	1.55+0.1	1.75+0.10	3.5+0.05	4.00+0.10	4.00+0.10	0.40+0.05	
SOT-23-6	8.0+0.2	4.5	1.40+0.10	1.0	1.55+0.1	1.75+0.10	3.5+0.05	4.00+0.10	4.00+0.10	0.40+0.05	
Mini-Melf/Glass (SOD-80)	8.0+0.2	4.5	1.80+0.10	1.0	1.55+0.1	1.75+0.10	3.5+0.05	4.00+0.10	4.00+0.10	0.20+0.05	
DO-213AA (Plastic mini-melf)	8.0+0.2	4.5	1.80+0.10	1.0	1.55+0.1	1.75+0.10	3.5+0.05	4.00+0.10	4.00+0.10	0.20+0.05	
Mini-SMA	8.0+0.2	4.5	1.80+0.10	1.0	1.55+0.1	1.75+0.10	3.5+0.05	4.00+0.10	4.00+0.10	0.20+0.05	
SOT-89	12.0+0.2	4.5	1.80+0.10	1.5	1.55+0.1	1.75+0.10	5.5+0.05	8.00+0.10	4.00+0.10	0.30+0.05	
Melf/Glass (LL-35)	12.0+0.2	8.2	2.70+0.10	1.5	1.55+0.1	1.75+0.10	5.5+0.05	4.00+0.10	4.00+0.10	0.40+0.05	
DO-213AB (Plastic melf)	12.0+0.2	8.2	2.70+0.10	1.5	1.55+0.1	1.75+0.10	5.5+0.05	4.00+0.10	4.00+0.10	0.40+0.05	
DO-214AC (SMA)	12.0+0.2	8.2	2.36+0.10	1.5	1.55+0.1	1.75+0.10	5.5+0.05	4.00+0.10	4.00+0.10	0.40+0.05	
DO-214AA (SMB)	12.0+0.2	8.2	2.40+0.10	1.5	1.55+0.1	1.75+0.10	5.5+0.05	8.00+0.10	4.00+0.10	0.40+0.05	
Mini-DIP Bridge	12.0+0.2	8.2	2.90+0.10	1.5	1.55+0.1	1.75+0.10	5.5+0.05	8.00+0.10	4.00+0.10	0.40+0.05	
DO-216AA(Power-Mite)	16.0+0.2	12.1	1.33+0.10	1.4	1.55+0.1	1.75+0.10	5.5+0.05	4.00+0.10	4.00+0.10	0.40+0.05	
DO-214AB (SMC)	16.0+0.2	12.1	2.40+0.10	1.5	1.55+0.1	1.75+0.10	7.5+0.10	8.00+0.10	4.00+0.10	0.40+0.05	
DFS (DIP Bridge)	16.0+0.2	12.1	3.50+0.10	1.5	1.55+0.1	1.75+0.10	7.5+0.10	12.0+0.10	4.00+0.10	0.40+0.05	
D-PAK (TO-252)	16.0+0.2	12.1	2.60+0.10	1.5	1.55+0.1	1.75+0.10	7.5+0.05	12.0+0.10	4.00+0.10	0.40+0.05	
D2-PAK (TO-263)	24.0+0.2	20.1	6.20+0.10	1.5	1.55+0.1	1.75+0.10	11.5+0.10	16.0+0.10	4.00+0.10	0.40+0.05	

Ao, Bo, Ko are determined by component size. The clearance between the component and the cavity must be within 0.05mm min. to 0.50mm max. for 8mm tape. 0.05mm min. to 0.65 mm max. for 12mm tape and 0.15mm min. to 0.9mm max. for 16mm tape and 0.05mm min. to 1.00mm max. for 24mm tape and larger. The component cannot rotate more than 20 degree within the determined cavity.

## Packaging Of Surface Mount Devices

Component Outline	Bulk	T/R 7"	T/R 13"
	Pcs/Tube	Pcs/Reel	Pcs/Reel
0603	-	4,000	-
1005	-	4,000	-
SOD-723	-	3,000	-
SOD-523	-	3,000	-
SOD-323	-	3,000	-
SC-76	-	3,000	-
SOD-123/SOD-123L	-	3,000	-
SOT-523	-	3,000	-
SOT-563	-	3,000	-
SOT-323	-	3,000	-
SOT-363	-	3,000	-
SOT-23	-	3,000	-
SOT-23-6	-	3,000	-
Mini-Melf/Glass (SOD-80)	-	2,500	-
DO-213AA (Plastic mini-melf)	-	2,500	-
Melf/Glass (LL-35)	-	-	5,000
DO-213AB (Plastic melf)	-	1,500	5,000
DO-214AC (SMA)	-	1,800	5,000
DO-214AA (SMB)	-	500	3,000
Mini-Dip Bridge	-	-	2,500
SOT-89	-	-	1,000
DO-216AA (Power-Mite)	-	-	12,000
DO-214AB (SMC)	-	500	3,000
DFS (DIP Bridge)	-	-	1,000
D-PAK (TO-252)	50	-	3,000
D2-PAK (TO-263)	50	-	800

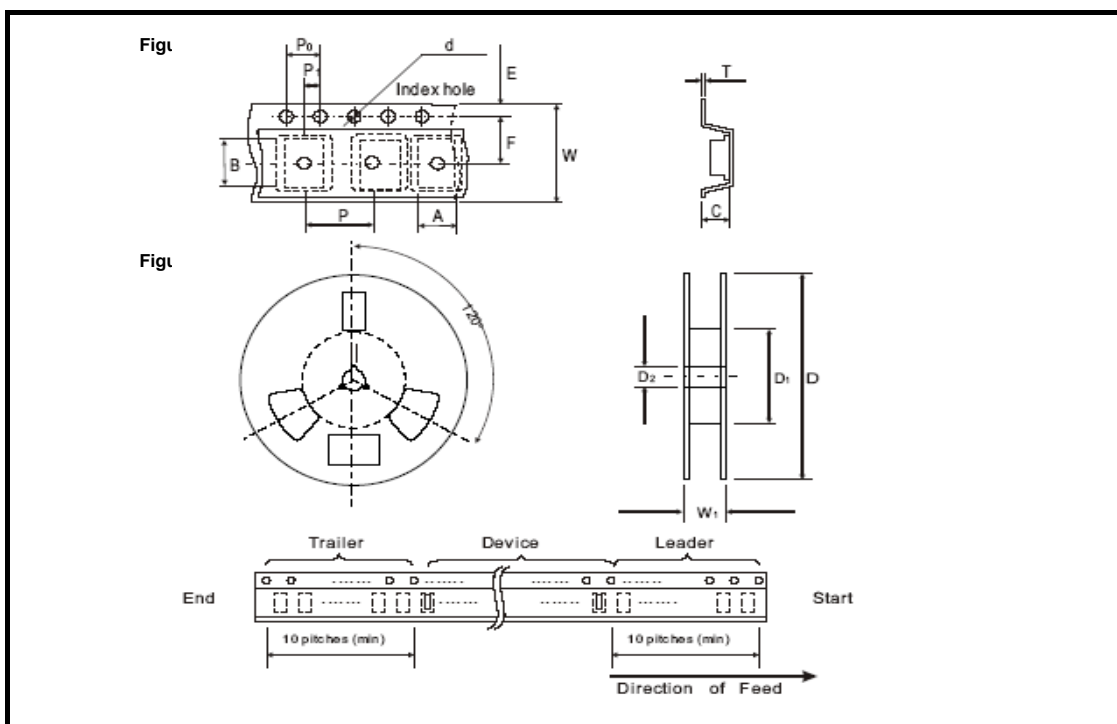
## Packaging Of Others

Component Outline	Bulk		Bridge Outline	Tube		
	Pcs/Box	Pcs/Tube		Pcs/Box	Pcs/Tube	Pcs/Box
GT Case	500	-	WOB	1,000	-	-
TO-220	2,000	50	KBP	500	-	-
ITO-220	2,000	50	KBU	400	-	-
TO-3P	1,500	30	KBL	500	-	-
HV05	100	-	KBPC-3	200	-	-
HV07	100	-	RS-5	200	-	-
FH	100	-	KBPC-8	200	-	-
TO-92	1,000	-	KBPC	50	-	-
			MT	50	-	-
			DIP Bridge	-	50	2,500
			GBL	800	-	-
			GBP	800	-	-
			GBU	800	20	1,000
			GBJ	250	15	750
			KBJ	360	20	1,000
			MP10	200	-	-
			GBPC	50	-	-

# Packaging Information of Surface Mount Device

## Surface Mount Reel Specifications ( See Figure B)

Component Outline	d Max. mm	D Max. mm	D1 Min. mm	D2 mm	G Min. mm	W1 Max. mm
0603	1.5	178	60.0	13.0+/-0.2	8.4	13.5
1005	1.5	178	60.0	13.0+/-0.2	8.4	13.5
SOD-723	1.5	178	60.0	13.0+/-0.2	8.4	11.4
SOD-523	1.5	178	60.0	13.0+/-0.2	8.4	11.4
SOD-323	1.5	178	60.0	13.0+/-0.2	8.4	11.4
SOD-123	1.5	178	60.0	13.0+/-0.2	8.4	11.4
Mini-Melf/Glass (SOD-80)	1.5	178	60.0	13.0+/-0.2	8.4	11.4
Mini-Melf/Plastic (DO-213AA)	1.5	178	60.0	13.0+/-0.2	8.4	11.4
Mini-SMA	1.5	178	60.0	13.0+/-0.2	8.4	11.4
SOT-523	1.5	178	60.0	13.0+/-0.2	8.4	11.4
SOT-323	1.5	178	60.0	13.0+/-0.2	8.4	11.4
SOT-363	1.5	178	60.0	13.0+/-0.2	8.4	11.4
SOT-23	1.5	178	60.0	13.0+/-0.2	8.4	11.4
SOT-23-6	1.5	178	60.0	13.0+/-0.2	8.4	11.4
SOT-89	1.5	178	60.0	13.0+/-0.2	13.0	16.1
Melf/Glass (LL-35)	1.5	330	50.0	13.0+/-0.2	12.4	18.4
Melf/Plastic (DO-213AB)	1.5	178	60.0	13.0+/-0.2	12.4	18.4
Melf/Plastic (DO-213AB)	1.5	330	50.0	13.0+/-0.2	12.4	18.4
DO-214AC (SMA)	1.5	178	60.0	13.0+/-0.2	12.4	18.4
DO-214AC (SMA)	1.5	330	50.0	13.0+/-0.2	12.4	18.4
Mini-DIP Bridge	1.5	330	50.0	13.0+/-0.2	12.4	18.4
DO-214AA (SMB)	1.5	178	60.0	13.0+/-0.2	12.4	18.4
DO-214AA (SMB)	1.5	330	50.0	13.0+/-0.2	12.4	18.4
DO-216AA (Power Mite)	1.5	330	75.0	13.0+/-0.2	16.4	22.4
DO-214AB (SMC)	1.5	178	60.0	13.0+/-0.2	16.4	22.4
DO-214AB (SMC)	1.5	330	50.0	13.0+/-0.2	16.4	22.4
DFS (DIP Bridge)	1.5	330	50.0	13.0+/-0.2	16.4	22.4
D-PAK (TO-252)	1.5	330	50.0	13.0+/-0.2	16.4	22.4
D2-PAK (TO-263)	1.5	330	50.0	13.0+/-0.2	24.4	30.4



## Packaging Information of Surface Mount Device

### Axial Lead Taping Specifications (See Figure C)

Component Outline	Component Pitch A (mm)	Component Pitch B (mm)	Lead to Lead Eccentricity D1-D2 (mm)	Lead Extension K (mm)	Lead Bending M (mm)	Cumulative Pitch P (mm)	Exposed Adhesive S (mm)	Tape Width T (mm)
DO-34(Glass)	5+-0.5	26+-0.5	1.0 Max.	0.8 Max.	1.2 Max.	2.0 Per 10 Pitch	0.8 Max	6+-0.4
DO-34(Glass)	5+-0.5	52+-0.5						
DO-35(Glass)	5+-0.5	26+-0.5						
DO-35(Glass)	5+-0.5	52+-0.5						
DO-41(Glass)	5+-0.5	26+-0.5						
DO-41(Glass)	5+-0.5	52+-0.5						
R1	5+-0.5	26+-0.5						
R1	5+-0.5	52+-0.5						
DO-41	5+-0.5	26+-0.5						
DO-41	5+-0.5	52+-0.5						
DO-15	5+-0.5	52+-0.5						
R3	5+-0.5	52+-0.5						
DO-201AD	10+-0.5	52+-0.5						
1.5KE	10+-0.5	52+-0.5						
R6	10+-0.5	52+-0.5						

Note: Each component lead shall be sandwiched between tapes for a minimum of 3.2mm

### Axial Lead Reel Specifications (See Figure D)

Component Outline	Reel Hole Diameter Do (mm)	Reel Inner Diameter D1 (mm)	Reel Diameter D2 (mm)	Reel Width W1 (mm)
DO-34(Glass)	30+-0.4	75+-0.3	360	50+-1
DO-34(Glass)				79+-1
DO-35(Glass)				50+-1
DO-35(Glass)				79+-1
DO-41(Glass)				50+-1
DO-41(Glass)				79+-1
R1				50+-1
R1				79+-1
DO-41				50+-1
DO-41				79+-1
DO-15				79+-1
R3				79+-1
DO-201AD				79+-1
1.5KE				79+-1
R6	79+-1			

### Packaging Of Axial Lead Devices

Component Outline	Bulk Pcs/Box	T/B AMMO Pcs/Box	T/R 13" Pcs/Reel
DO-34(Glass)	2,000	5,000	10,000
DO-35(Glass)	2,000	5,000	10,000
DO-41(Glass)	1,000	2,500	5,000
R1	1,000	3,000	5,000
DO-41	1,000	5,000	5,000
DO-15	500	3,000	4,000
R3	500	3,000	3,000
FV5M(FV5M-1)	-	-	5,000
DO-201AD	500	1200	1,200
1.5KE	500	1200	1,200
R6	250	-	1,000

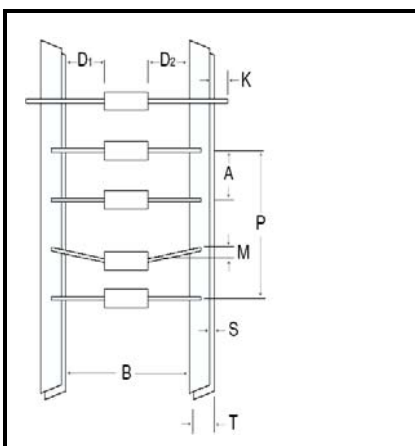


Figure C

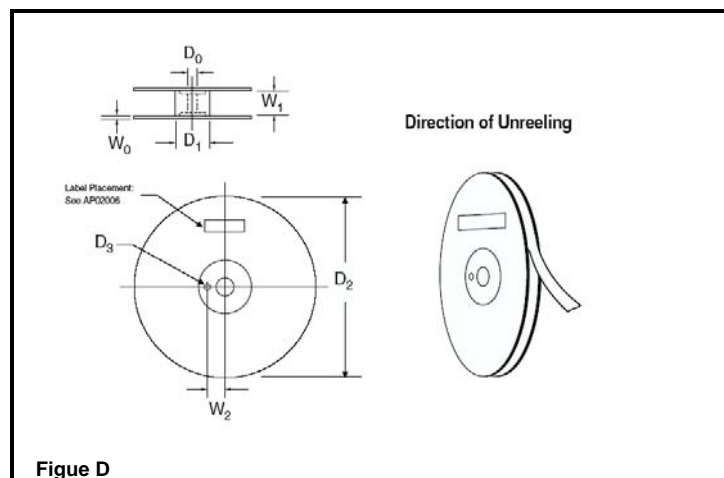


Figure D